

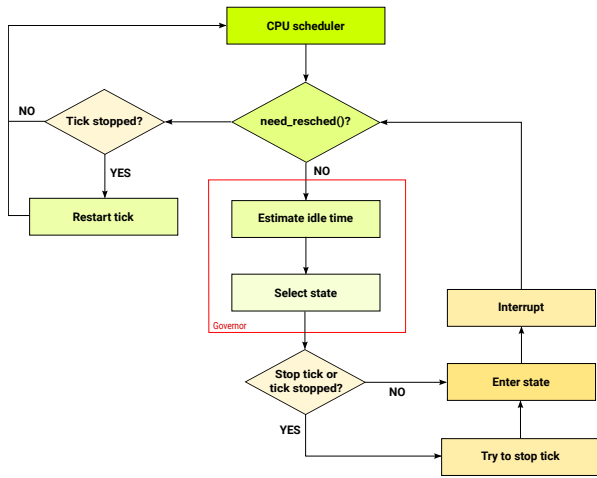
Towards Improved Selection of CPU Idle States

Rafael J. Wysocki

Intel Open Source Technology Center

November 15, 2018

CPU Idle Loop (Since Linux* 4.17)



* Other names and brands may be claimed as the property of others

CPU Idle States

Array of idle state objects per logical CPU

- 1 Ordered (shallowest first).
- 2 State parameters

Target residency : The CPU shouldn't be interrupted for at least this time after asking the hardware to enter this idle state.

Exit latency : Worst-case time span between asking the hardware to enter this idle state and the first instruction that can be executed after wakeup.

Idle State Selection Problem

Input

- Time till the closest timer (known exactly).
- Latency constraints (known exactly).
- Idle duration data from the past (distribution).
- Interrupt timings in the past (distribution)???

Questions

- 1 Is there a reason to believe that the CPU will be woken up before the closest timer?
- 2 What is the most likely time frame of that wakeup?

Issues In The menu Governor

Known issues in menu (Linux* 4.20-rc1 and later)

- 1 Timer wakeups included in pattern detection (correctness).
- 2 Pattern detection takes irrelevant data into account (overhead).
- 3 Extra latency constraints based on “I/O waiters” data (correctness).
- 4 Correction factors depending on “I/O waiters” data (correctness).

Observations

- Selecting idle states that are too shallow is bad for energy-efficiency.
- Selecting idle states that are too deep is bad for energy-efficiency and latency (performance).

* Other names and brands may be claimed as the property of others

Possible Mitigation Strategies

- 1 Introduce a new governor, leave menu alone (viable).
 - Need to fix switching governors at run time.
- 2 Fix menu (but it will become a different governor then).
- 3 Fix menu somewhat and introduce a new governor.

Opinions? Comments? Recipes? Suggestions?



Disclaimer

Intel technologies' features and benefits depend on system configuration and may require enabled hardware, software or service activation. Performance varies depending on system configuration. No computer system can be absolutely secure. Check with your system manufacturer or retailer or learn more at www.intel.com.

Intel and the Intel logo are trademarks of Intel Corporation in the U.S. and/or other countries. *Other names and brands may be claimed as the property of others.

© Intel Corporation